

Jebel Ohier PCD Project

The first porphyry discovery in the ANS



شركة كيو ام اس دي للتعدين المحدودة
QMSD MINING Co. LTD.



Commencing exploration activities in 2013, QMSD has discovered the first large scale copper porphyry on the Arabian Nubian Shield (ANS) – Jebel Ohier (JO). One of the oldest porphyries yet discovered at >700ma, this exciting find is just one of the exploration targets on QMSD’s concession areas of Blocks 62 and 62b.



Location of blocks



Exploration camp block 62

Exploration Milestones

2013/14	Khartoum office and field camp established Remote sensing, mapping sediment sampling and target generation ➔ Major mineralizing system discovered at JO
2014/15	RC drilling, channel sampling, mapping, hyperspectral, Ground geophysics ➔ First indications of possible PCD discovery at JO
2015/16	RC/DD drilling, geochronology, met test work, airborne geophysics ➔ JO confirmed as major, newly-discovered PCD, oxide/sulphide mineralization
2016/17	DD drilling phase 3, geo modeling 3D, Anaconda mapping ➔ Main JO orebody defined, new PCD targets around JO
2017/18	P3 drilling, ground geophysics, 3D domaining and modeling ➔ Maiden Mineral Resource Estimate, ITR, Mineral experts Report

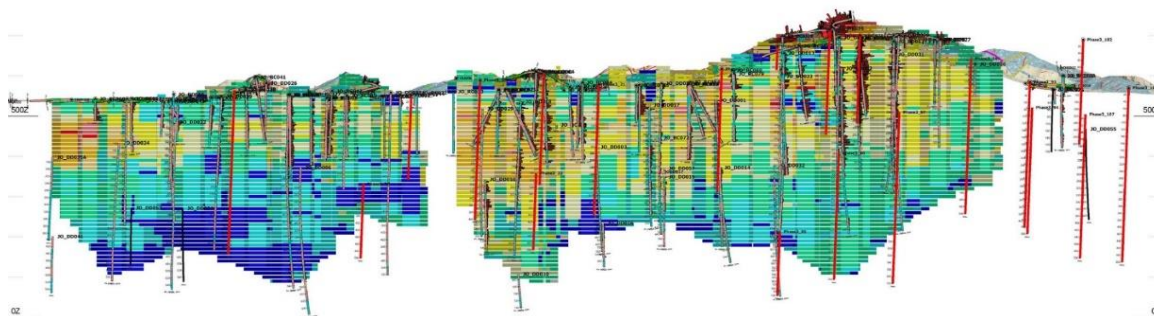


Mineral Resource Estimate as at December 31 2017

Category	Orebody	Oxide/ sulphide	Ore (Mt)	Cu (%)	Cu content (t)	Au (g/t)	Au content (oz)
Inferred	JO East	Oxide	55.6	0.40	221,900	0.13	234,700
Inferred	JO West	Oxide	16.2	0.31	50,000	0.05	22,500
Total oxide Inferred:			71.8	0.38	271,900	0.11	257,200
Inferred	JO East	Sulphide	138.3	0.49	673,500	0.08	347,200
Inferred	JO West	Sulphide	36.2	0.39	141,800	0.04	41,800
Total sulphide Inferred:			174.5	0.47	815,300	0.07	389,000
Total Inferred:			246.3	0.44	1,087,200	0.08	646,200

Category	Cut-off (% Cu)	Ore (Mt)	Cu (%)	Cu content (t)	Au (g/t)	Au content (oz)
Inferred	0.2	246.3	0.44	1,087,200	0.08	646,200
Inferred	0.1	360.1	0.35	1,250,000	0.06	711,000
Inferred	0.0	466.9	0.28	1,320,000	0.05	745,000

- (i) The information in this report that is related to Mineral Resource has been reviewed and endorsed by Remi Bosc, who is a Member of the European federation of Geologists and an independent consultant. Remi Bosc has sufficient relevant experience to qualify as "qualified person" set out in National Instrument 43-101 of the Canadian Securities Administrators ("NI 43-101").
- (ii) Values were rounded to two or three significant figures to reflect the relative estimation precision of each resource classification.
- (iii) Dyke material in the sulphide zone has been excluded from the Resource estimate, with the proportion of dyke material in each block estimated using Indicator Kriging.
- (iv) Exploration Potential should not be mistaken as Mineral Resource.
- (v) Cut off 0.2% Cu



Contact:

Email – contactus@qmsd.com

Website – www.qmsd.com