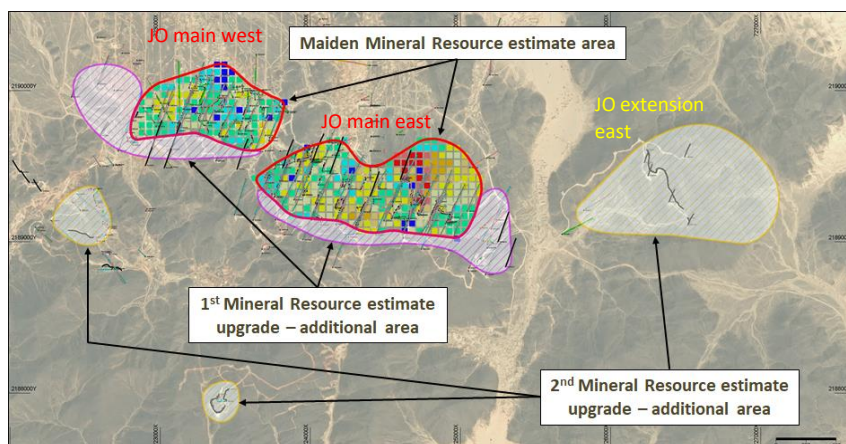


Information Release 02

June 2018

Exciting developments at the end of the Phase 3 (P3) drilling program demonstrate once again that the Jebel Ohier porphyry copper deposit (JO PCD) still has many secrets to divulge...

The last two holes of the P3 DD drill program delivered exciting intersections of high grade mineralization. These (plus others) were drilled outside the envelope of the current Mineral Resource estimate (based on first 22 holes of P3) and were also blind i.e. no surface expression of mineralization. Along with the other 55 drill holes in P3 these will add considerable additional tonnage during the upcoming Resource update (1).



In addition, RC drilling on JO East (extension) and elsewhere confirmed new porphyry centers/ mineralization possibly as large again as the JO deposit covered by the block model (left). This will be DD drilled during P4 and included in Resource update (2).

Richly mineralized DD holes occurring outside of the Resource block model (right) will add significant tonnage and copper/gold contents to the upcoming Mineral Resource update.

